



Share Between Two Flexy

Using Tag Data

SOLUTION SHEET

AM-1002-00 1.0 en-US ENGLISH

Important User Information

Disclaimer

The information in this document is for informational purposes only. Please inform HMS Industrial Networks of any inaccuracies or omissions found in this document. HMS Industrial Networks disclaims any responsibility or liability for any errors that may appear in this document.

HMS Industrial Networks reserves the right to modify its products in line with its policy of continuous product development. The information in this document shall therefore not be construed as a commitment on the part of HMS Industrial Networks and is subject to change without notice. HMS Industrial Networks makes no commitment to update or keep current the information in this document.

The data, examples and illustrations found in this document are included for illustrative purposes and are only intended to help improve understanding of the functionality and handling of the product. In view of the wide range of possible applications of the product, and because of the many variables and requirements associated with any particular implementation, HMS Industrial Networks cannot assume responsibility or liability for actual use based on the data, examples or illustrations included in this document nor for any damages incurred during installation of the product. Those responsible for the use of the product must acquire sufficient knowledge in order to ensure that the product is used correctly in their specific application and that the application meets all performance and safety requirements including any applicable laws, regulations, codes and standards. Further, HMS Industrial Networks will under no circumstances assume liability or responsibility for any problems that may arise as a result from the use of undocumented features or functional side effects found outside the documented scope of the product. The effects caused by any direct or indirect use of such aspects of the product are undefined and may include e.g. compatibility issues and stability issues.

Table of Contents

Page

1	Preface	5
1.1	About This Document	5
1.2	Document history.....	5
1.3	Related Documents	5
1.4	Document Conventions	5
1.5	Trademark Information	6
2	Objectives	7
2.1	Requirements	7
3	Procedure.....	8
3.1	Creating Sharable Tags	8
3.2	BASIC IDE Code	9
3.3	Sending Data	11

This page intentionally left blank

1 Preface

1.1 About This Document

This document explains in a few steps how to enable the Flexy to exchange tag data.

For additional related documentation and file downloads, please visit www.ewon.biz/support.

1.2 Document history

Version	Date	Description
1.0	2021-02-12	First release

1.3 Related Documents

Document	Author	Document ID
Programming Reference Guide	HMS	RG-0006-01

1.4 Document Conventions

Numbered lists indicate tasks that should be carried out in sequence:

1. First do this
 2. Then do this
- Bulleted lists are used

for:

- Tasks that can be carried out in any order
 - Itemized information
- An action
- and a result

User interaction elements (buttons etc.) are indicated with bold text.

Program code and script examples

Cross-reference within this document: [Document Conventions, p. 5](#)

External link (URL): www.hms-networks.com



WARNING

Instruction that must be followed to avoid a risk of death or serious injury.



Caution

Instruction that must be followed to avoid a risk of personal injury.



Instruction that must be followed to avoid a risk of reduced functionality and/or damage to the equipment, or to avoid a network security risk.



Additional information which may facilitate installation and/or operation.

1.5 Trademark Information

Ewon[®] is a registered trademark of HMS Industrial Networks SA. All other trademarks mentioned in this document are the property of their respective holders.

2 Objectives

The objective of this document is to setup tags that can be shared with another Flexy.

2.1 Requirements

There are some requirements to use document:

1. Ewon Flexy.
2. Device name must contain no space.
3. Each tag must have the same name n the other device.
4. Talk2m Developer ID

3 Procedure

3.1 Creating Sharable Tags

For this example, we are going to create a tag called **test**. The way that the BASIC IDE code is written is to make it so that if a tag has the description “**send**” then it will share data to the other Flexy that has a tag matching the same name.

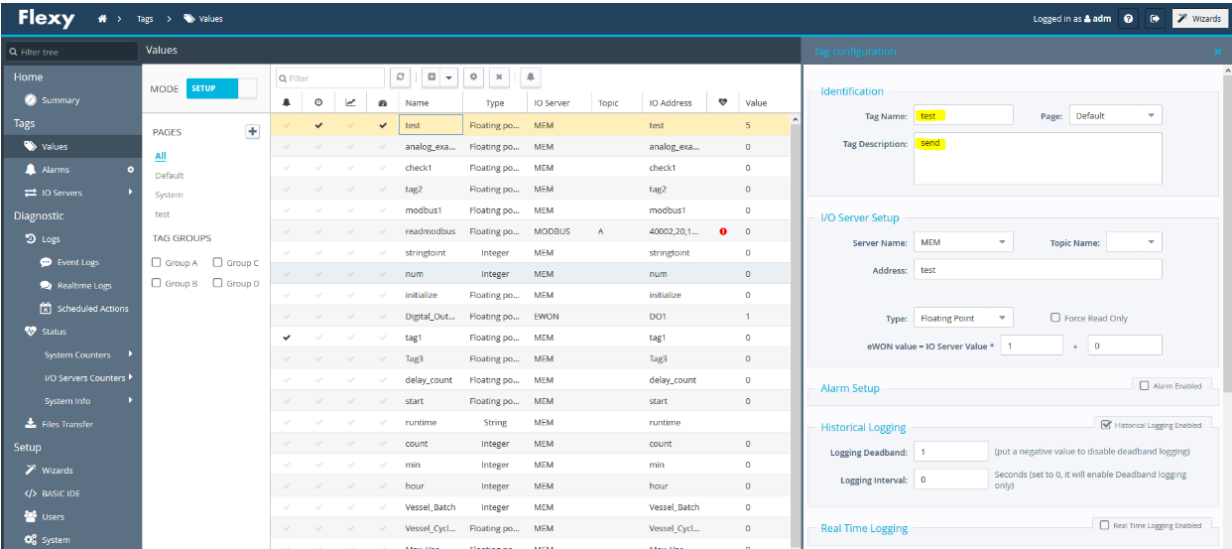


Fig. 1 How the tag looks on each Flexy

3.2 BASIC IDE Code

This section of code is written so that it will have a timer go off every 5 seconds and then push the values to the other flexy in the update remote section. It also will have you enter the account information of the account for the Flexy that you are working with as well as the eCatcher username/password. The developer ID needed to run the code can be gotten from a link at the bottom of the document. The “devicename” is what you called the device that you’re writing to in eCatcher and the username and password are the logins for that specific device. The code on the following page can be copied into the BASIC IDE.

```
TSET 1, 5
ONTIMER 1, "GOTO UpdateRemote"
ONSTATUS "@response()"
//Account info
account$ = "tims"
username$ = "script_user"
password$ = "script_user"
developerid$ = "xxxxxxxx-xxxx-xxxx-xxxx-xxxxxxxxxxxx"
//info for remote flexy
devicename$ = "Deryck_Flexy"
deviceusername$ = "adm"
devicepassword$ = "adm"
url$ = "https://m2web.talk2m.com/t2mapi/get/"+devicename$+"/rogi.bin/UpdateTagForm?"
accountinfo$ = "&t2maccount="+account$+"&t2musername="+username$+"&t2mpassword="+password$
accountinfo$ = accountinfo$ + "&t2mdeveloperid="+developerid$+"&t2mdeviceusername="+deviceusername$+"&t2mdevicepassword="+ devicepassword$
```

Fig. 2 Section of the code that needs to be edited to your specific parameters.

```

TSET 1, 5

ONTIMER 1, "GOTO UpdateRemote"

ONSTATUS "@response()"

//Account info

account$ = "tims"

username$ = "script_user"

password$ = "script_user"

developerid$ = "xxxxxxxx-xxxx-xxxx-xxxxxxxxxxxx"

//info for remote flexy

devicename$ = "Device_Flexy"

deviceusername$ = "adm"

devicepassword$ = "adm"

url$ = "https://m2web.talk2m.com/t2mapi/get/"+devicename$+"/rcgi.bin/UpdateTagForm?"

accountinfo$ = "&t2maccount="+account$+"&t2musername="+username$+"&t2mpassword="+password$

accountinfo$ = accountinfo$ + "&t2mdeveloperid="+developerid$+"&t2mdeviceusername="+deviceusername$+"&t2mdevicepassword="+devicepassword$

UpdateRemote:

TSET 1, 0

method$ = "POST"

//get number of tags and loop through each one

SETSYS SYS, "LOAD"

C% = GETSYS PRG, "NBTAGS"

x%=1

n%=0

FOR i% = 0 TO (C% - 1)

    SETSYS TAG, "LOAD", -i%

    tagname$ = GETSYS TAG, "Name"

    desc$ = GETSYS TAG, "Description"

    If (desc$ = "send")Then

        // Print tagname$ + desc$

        a$ = GETSYS TAG, "TagValue"

        IF (x% = 1) Then

            payload$ = "&TagName"+ STR$(x%) + "=" + tagname$ + "&TagValue"+ STR$(x%) + "=" + a$

            n%=1

        Else

            //for each loop grab the tag at with that ID and send to remote site

            payload$ = payload$ + "&TagName"+ STR$(x%) + "=" + tagname$ + "&TagValue"+ STR$(x%) + "=" + a$

        ENDIF

        x%=x%+1

        //Print "success " + "index: " + STR$(i%)

    Endif

NEXT i%

//Print payload$

If (n% = 1)Then

    payload$ = payload$ + accountinfo$

    REQUESTHTTPX url$, method$, "", payload$

    actionID% = GETSYS PRG, "ACTIONID"

    //ONSTATUS "@response()"

    Print "Data sent"

Endif

```

Fig. 2 BASIC IDE Code needed

3.3 Sending Data

At this point, all the information above should have been edited and you can copy and paste in the rest of the code from Fig. 2 into the BASIC IDE.

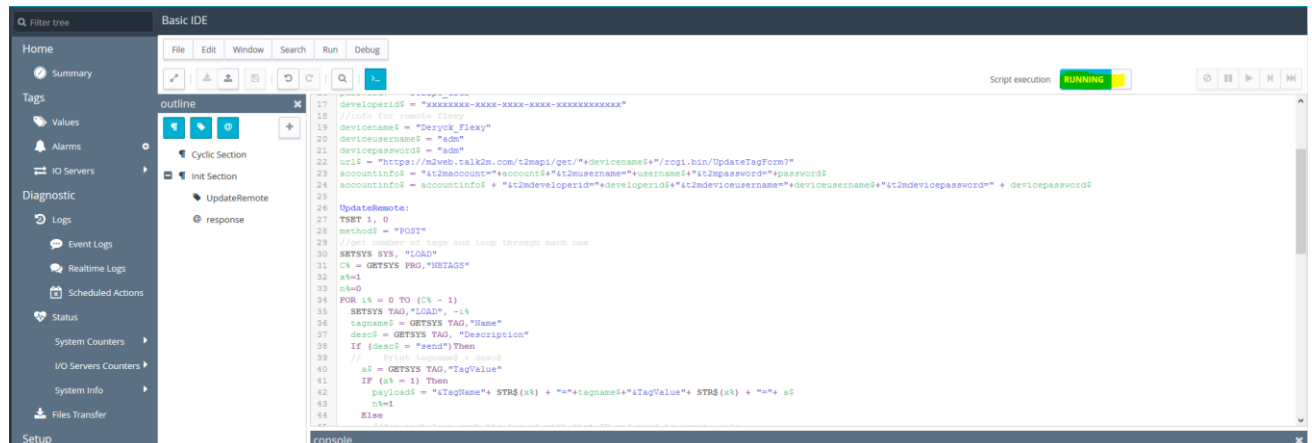


Fig. 3 Showing what it should look like inside the BASIC IDE section

To check if this is working, go to the values section and make sure you're in the view mode. Now we should be able to click on the tag "test" and go to edit value. After making a change on the device that has the code running on it, you should notice the second device is showing the same value. It is essentially pushing the value from the flexy with the BASIC code onto the other device by writing to it over the M2Web connection.

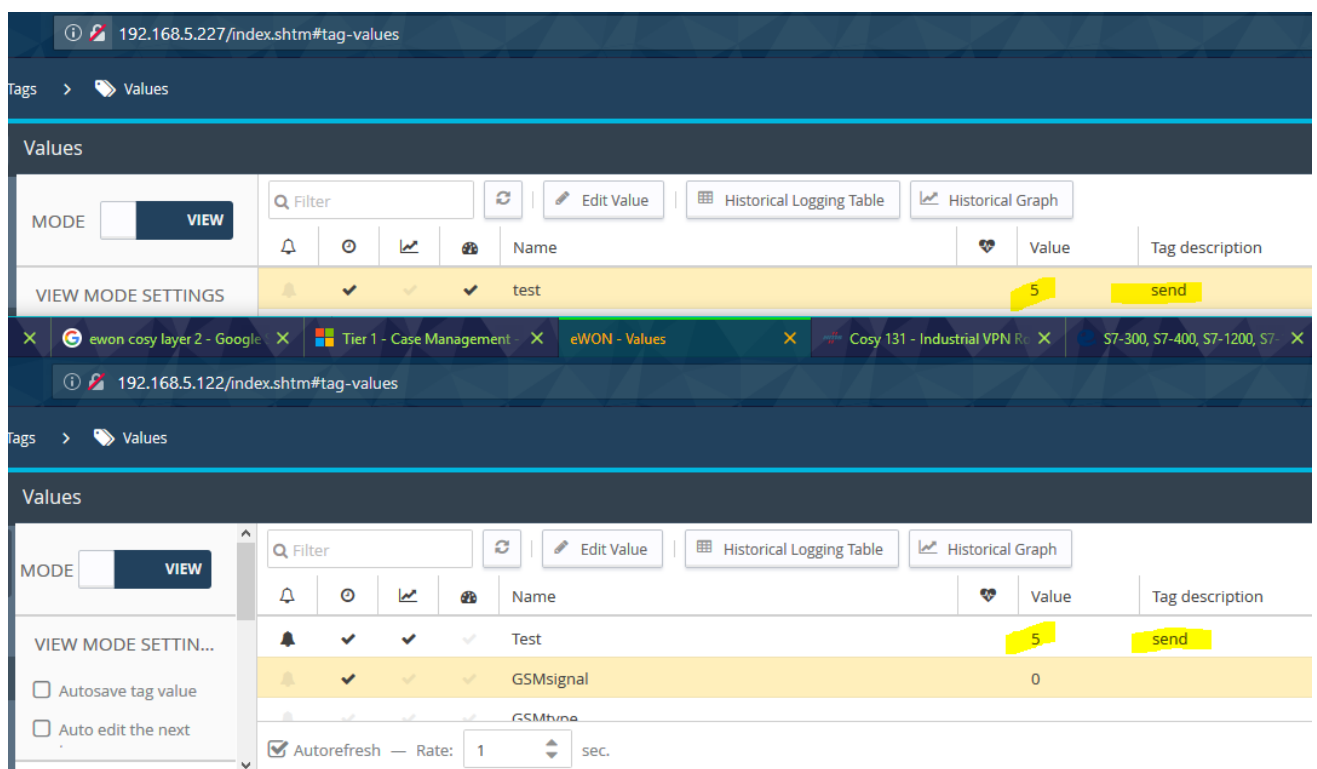


Fig. 4 Example showing each Flexy

This page intentionally left blank

