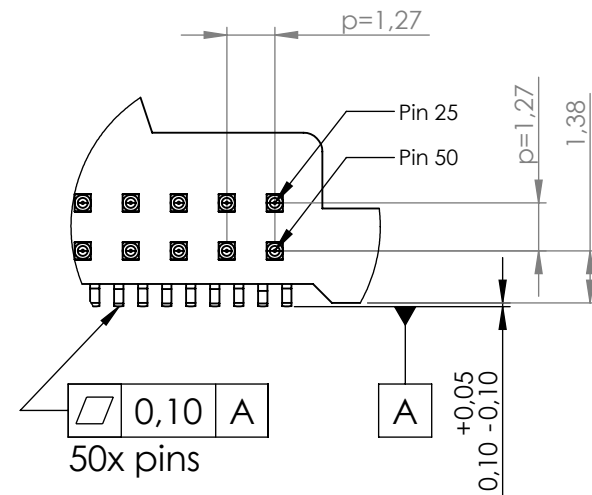
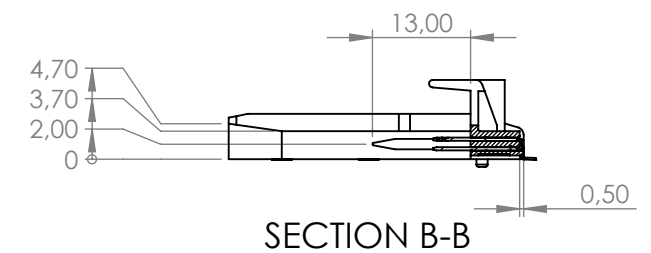
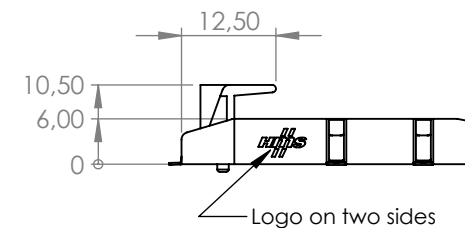
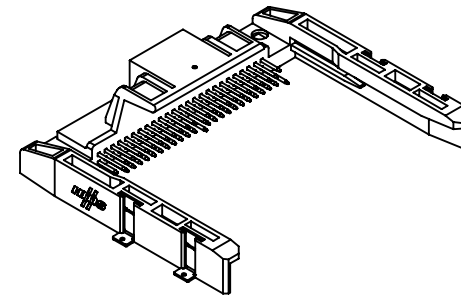
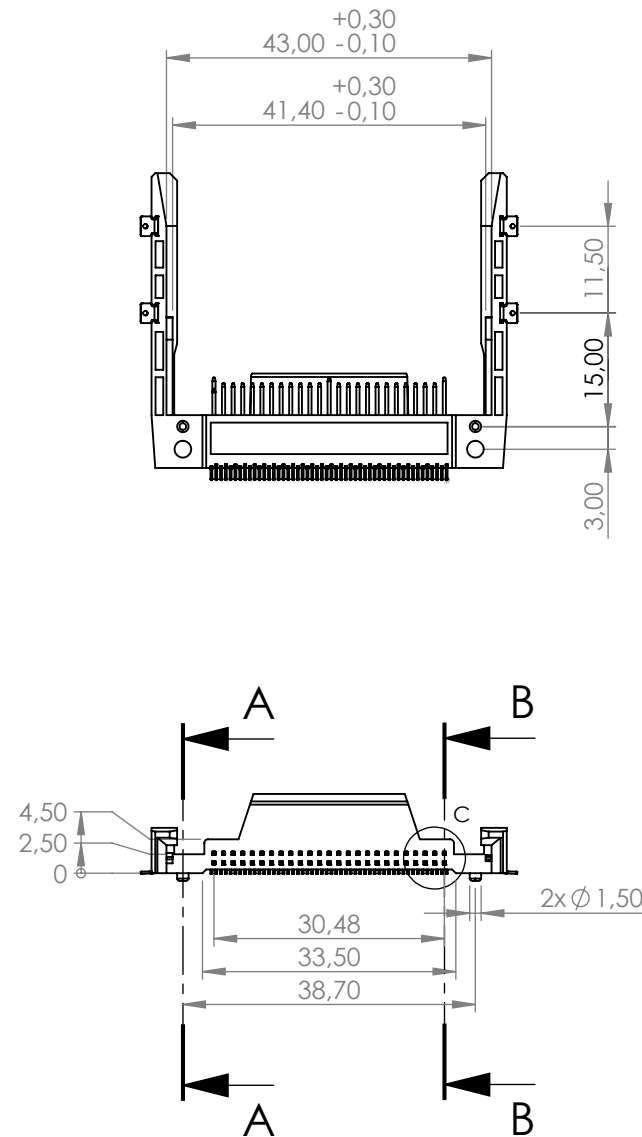
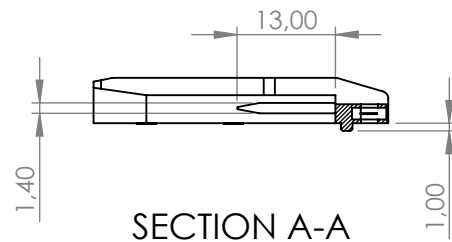


Rev.	Description	Date	Sign
1.10	Note1. Added LCP type	2019-01-30	Mahal
1.11	Updated Drawing Layout	2019-04-01	Mahal
1.11.1	Changed material definition	2019-04-15	MaHal



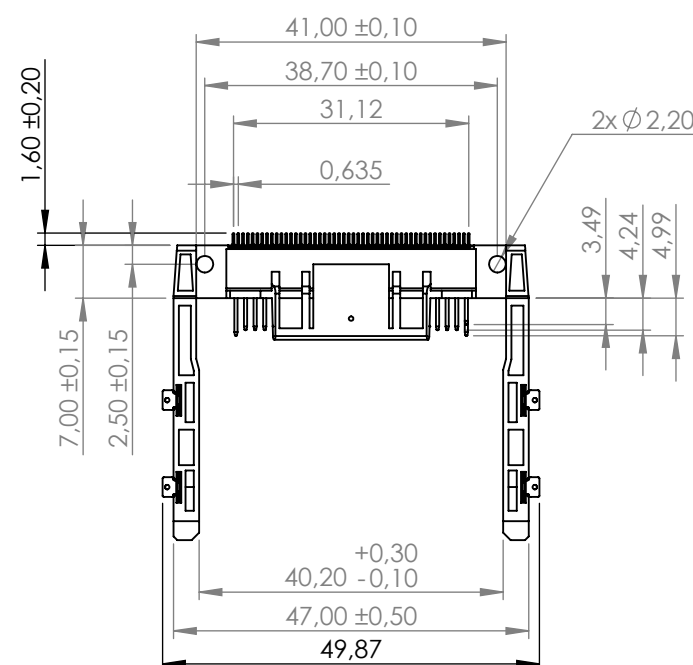
DETAIL C
SCALE 5 : 1



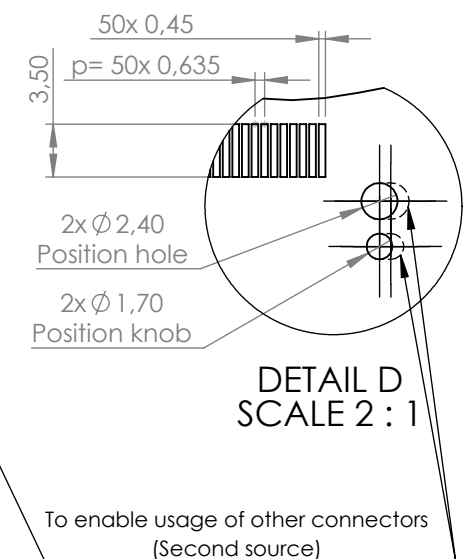
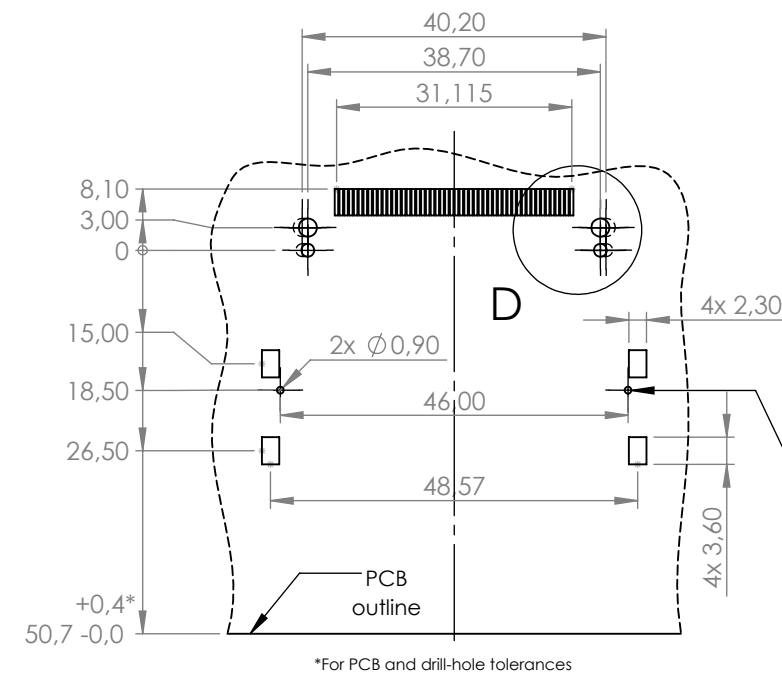
UNSPECIFIED DIMENSIONS ACCORDING TO 3D-FILE.


Note:

1. Housing: LCP (Liquid Crystal Polymer) Type: S475. Color: Natural, Thermoplastic, UL94 V-0
2. Contact: Copper Alloy
3. Operation voltage: 100 VAC max
4. Current rating: 0.5 Amp.
5. Contact resistance: 40m ohms max.
6. Insulation resistance: 1000M ohms min 500 VDC
7. Dielectric withstanding voltage: 500VAC/1 minute.
8. Operating Temperature: -40°C to +85°C.
9. Resistance to reflow solder heat: Peak temperature: 260°C, duration 1 min. Total reflow process time: 7 min.
10. Durability: 5000 Cycles
11. Finish/Plated: Terminal: 15µ" min AU Plated on Contact Area, 100µ" min Tin Plated on solder area, 50µ min Ni Under Plated over all Grounded Pin: 80µ" min Tin Plated on solder area, 50µ" min Ni Under Plated over all
12. RoHS and REACH compliant
13. Storage -25°C to 65°C, 0-90% RH



Recommended PCB-layout
General tolerances $\pm 0,05\text{mm}$



Owner		Scale 1:1	Size	Weight	Finishing
HMS Industrial Networks AB Stationsgatan 37 S-302 45 Halmstad Tel: +46 (0)35 - 17 29 00 Fax: +46 (0)35 - 17 29 09		UNLESS OTHERWISE SPECIFIED DIMENSIONS ARE IN MILLIMETERS. TOLERANCE: + / - 0,1		Title Compact Flash, CompactCom Host Connector	
Sign: MaHal		Date: 2019-03-12		Rev. 1.11.1	Sheet: 1 of 1
				Document nr	HMS nr SP1137